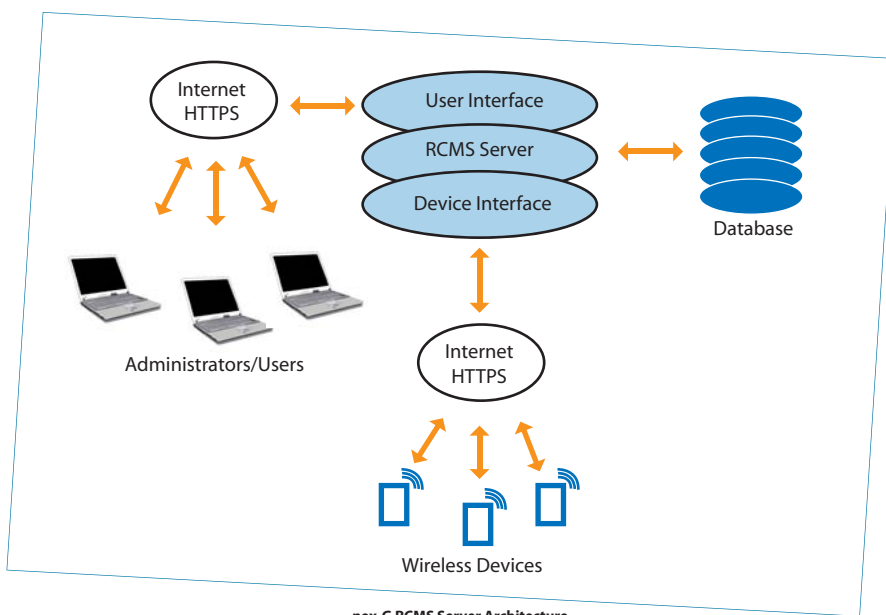




nex-G RCMS

Remote Configuration Management Systems

nex-G Remote Configuration Management System (RCMS) is a centralized monitoring and management solution for wireless network equipment. At the heart of the RCMS is a powerful and efficient engine that securely gathers, interprets and records information from registered network devices, and makes that information available to network administrators through a convenient, secure, and attractive Web interface.



However, as the name implies, the most important feature of the nex-G RCMS is configuration management. The nex-G RCMS can retrieve and/or store configuration files from/to nex-G based devices (that are online and connected to the server) at any time, turning management of large groups of devices from an administrative nightmare into a single click operation. Remote firmware update is part of the core functionality as well, so forget having to individually update firmware on tens or hundreds of network devices — just upload the new firmware image to the nex-G RCMS server and schedule a group firmware update!

Configuration change logging ensures that administrators can easily revert any registered device back to a known working configuration in cases when a damaged or invalid configuration is uploaded.

Registered devices can be conveniently grouped into a hierarchy of named domains and subdomains, reflecting their geographical distribution, hardware type, or any other criteria. The RCMS server can store common configurations for entire domains, with a possibility of overriding individual settings on a per-subdomain or per-device basis.

This powerful configuration merging feature greatly simplifies the process of managing large group of wireless network devices, and reduces risk of human error.

Configurable automatic device registration and provisioning enables administrators to define ranges of MAC addresses and domains that unregistered devices will get automatically assigned to once they connect to the server for the first time and their MAC address falls into a corresponding range. In addition, a preloaded configuration can be uploaded to an automatically registered device during its first connection, enabling features like plug'n'play operation, redirection to other RCMS servers and many more.

PRODUCT OVERVIEW

- Continuous monitoring of device connectivity
- Wireless device configuration monitoring:
 - device firmware revision
 - changes in device configuration
- Wireless device configuration management:
 - Download current configuration from devices
 - Upload complete or partial configuration to devices
- Wireless device firmware updating
- Automatic device registration and provisioning
- Multi-user environment with configurable access control
- Secure HTTPS based client-server communication and client authentication

Tight integration with the nex-G Configurator configuration editor makes creating, editing, and validating device configurations even simpler.

The nex-G RCMS is a multi-user environment with configurable user access permissions, so it's easy to have multiple administrators managing different networks on the same server, without having access to each other's equipment. Best of all, the communication between managed devices and the nex-G RCMS server is always initiated by a nex-G RCMS agent service running on every nex-G based device, meaning that the nex-G RCMS will work just fine with devices that are behind NAT routers, firewalls etc., as long as the devices have outside connectivity.

The nex-G RCMS server is easy to install and deploy because of its multiplatform nature and reliance on standard communication protocols. Integration with third party de facto industry standard network monitoring and management tools is one of our near future plans.

FEATURES

Continuous Device Monitoring

- Device connectivity
- Configuration consistency
- Firmware revision

Configuration and Firmware Management

- Efficient management of large groups of devices
- Download current configuration from device
- Upload full or partial configuration to devices
- Remote firmware updates
- Device configuration logs, possibility to revert changes
- Automatic device registration and provisioning
- Pool of common configurations

Collection and Visualization of Statistics

- Wide range of statistics available for collecting
- Attractive graphical visualization

Convenient User Interface

- Web based interface – no client software required
- User authentication and access control
- Domain based device grouping
- Extensive device status display

SYSTEM REQUIREMENTS

RCMS Server

- Machine: Linux x 86 Server
- Ram: 512MB or more, depending on estimated number of managed devices
- Disk: 700MB minimum with additional 1–2MB per managed devices, with 20MB free (minimum)

Client

- Internet Explorer v6 or higher
- Mozilla Firefox v1.0 or higher
- Other compatible browser with JavaScript support



nex-G Systems Pte Ltd

25 Kallang Avenue #07-05 Singapore 339416
Tel: (65) 6238 8816 Fax: (65) 6238 1281 Email: info@nex-G.com

Website: www.nex-G.com